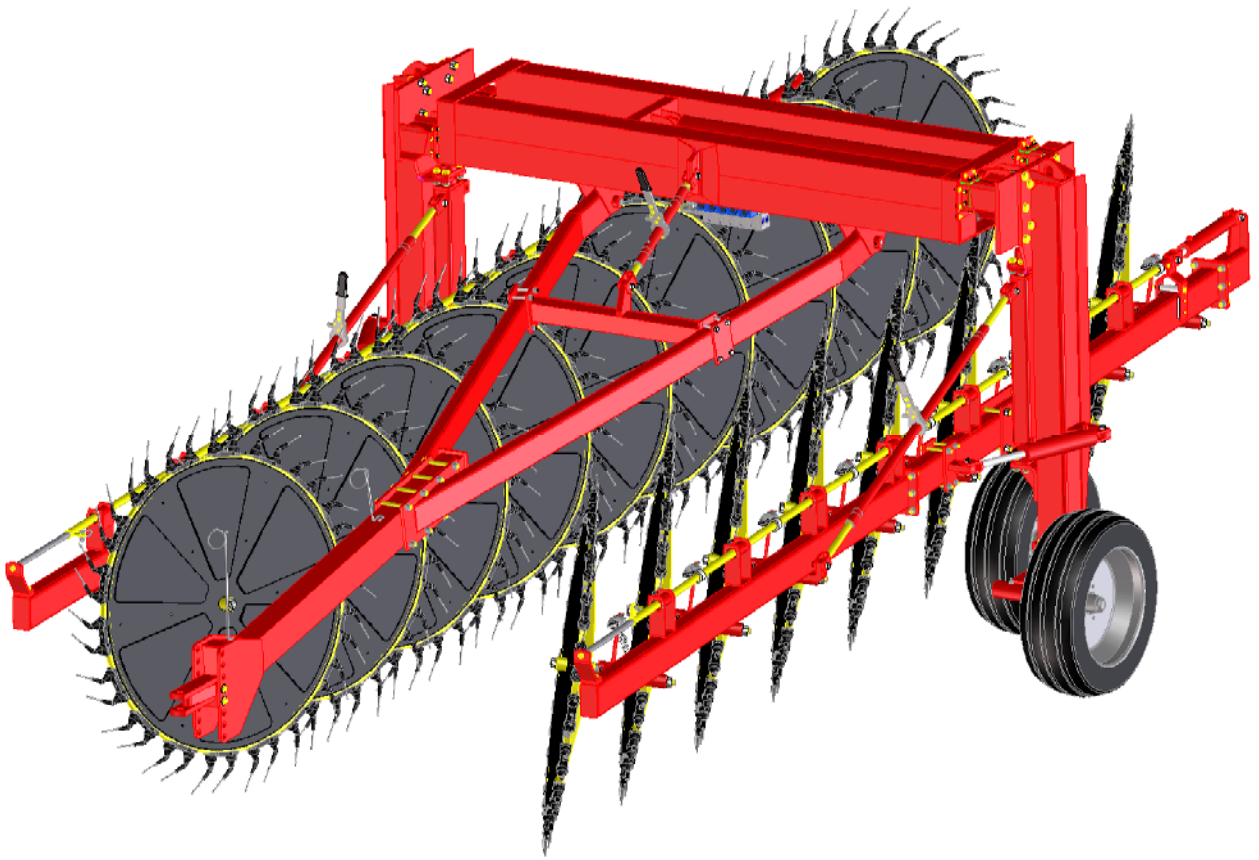


AGRICULTURAL MACHINERY

**sitrex**®  
Spa

## SPARE PARTS LIST



**PRO SERIES 17 WHEELS**

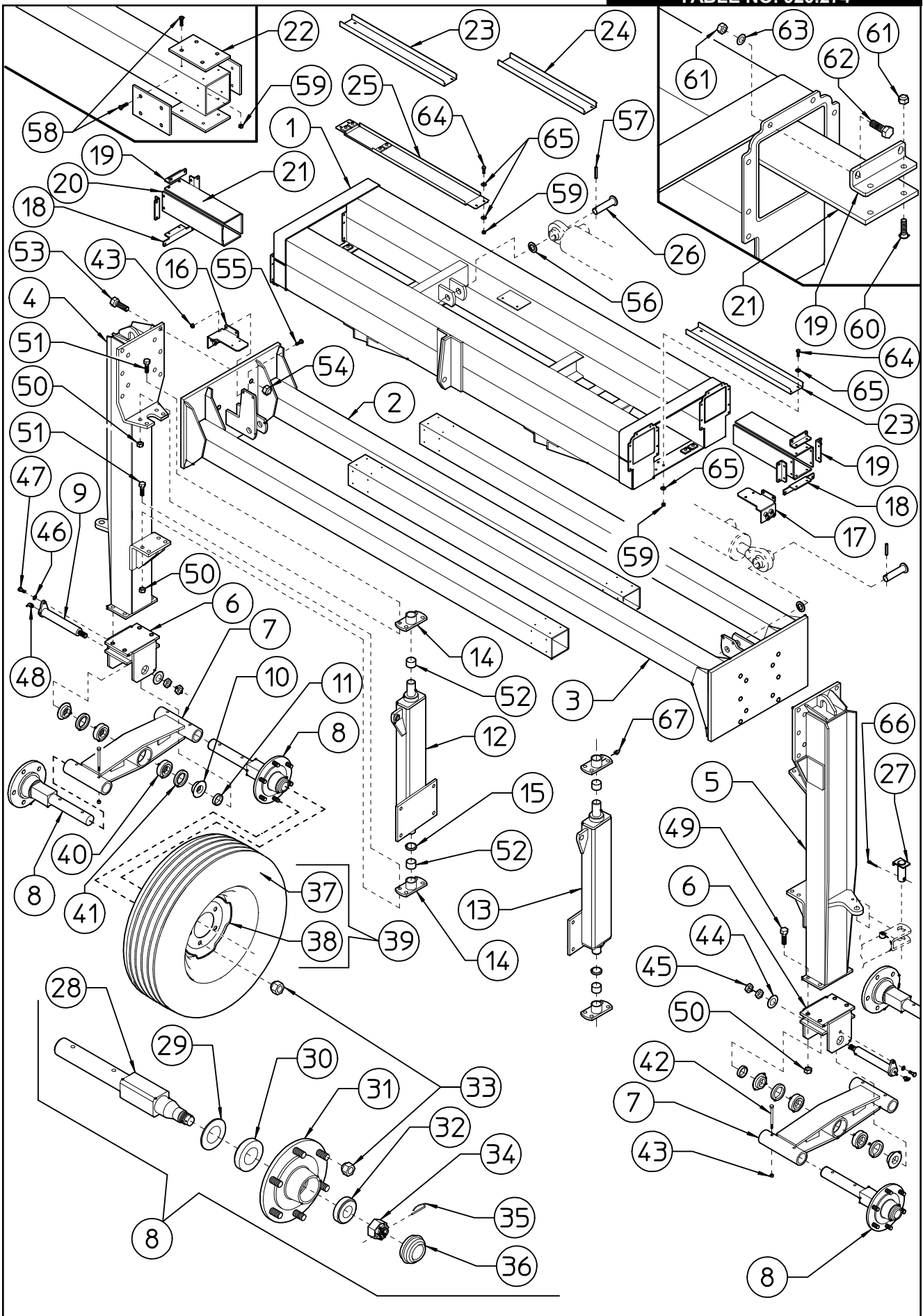


TABLE PART NO 920.274				
ITEM	PART NO	Q.ty	DESCRIPTION	NOTE
1	230.527	1	CROSSPIECE	
2	230.528	1	RH CROSSPIECE	
3	230.529	1	LH CROSSPIECE	
4	230.530	1	RH WHEEL SUPPORT	
5	230.531	1	LH WHEEL SUPPORT	
6	230.556	2	SUPPORT	
7	230.557	2	SUPPORT	
8	230.554	4	HUB ASSY	
9	230.603	2	PIN $\phi$ 45	
10	230.560	4	BUSH	
11	230.561	2	SHIM	
12	230.551	1	RH SUPPORT	
13	230.552	1	LH SUPPORT	
14	230.562	4	SUPPORT	
15	230.575	2	SHIM	
16	230.532	1	RH HOSE SUPPORT	
17	230.533	1	LH HOSE SUPPORT	
18	230.537	4	SUPPORT	
19	230.536	12	SUPPORT	
20	230.622	2	SLIDING	
21	230.538	14	SLIDING	
22	230.539	16	SLIDING	
23	230.534	2	SUPPORT	
24	230.619	2	SUPPORT	
25	230.535	1	SUPPORT	
26	230.604	4	PIN $\phi$ 30	
27	230.368	2	PIN $\phi$ 25	
28	230.555	4	PIN	
29	630.446	4	DUST COVER	
30	630.445	4	BEARING 30210	
31	230.558	4	HUB	
32	630.444	4	BEARING 30207	
33	620.300	24	NUT M18x1,5	
34	630.447	4	NUT M30x1,5 UNI 5594	
35	600.291	4	SPLIT PIN $\phi$ 3	
36	630.449	4	CAP	
37	620.298	4	TIRE	
38	620.299	4	RIM	
39	620.264	4	COMPLETE WHEEL	
40	630.450	4	BEARING 30209A	
41	620.951	4	SEAL $\phi$ 55-85x10	
42	630.485	8	SCREW M10x70 DIN 912	
43	600.029	12	NUT M10 DIN 980	
44	610.522	2	WASHER $\phi$ 34-60x5 DIN 125A	
45	610.933	4	NUT M33 DIN 936	
46	600.089	2	WASHER $\phi$ 13 DIN 125A	
47	600.770	2	SCREW M12x20 DIN 933	
48	610.808	2	GREASE NIPPLE M8-90°	
49	610.167	8	SCREW M16x45 DIN 933	
50	600.080	24	NUT M16 DIN 980	
51	600.384	16	SCREW M16x50 DIN 933	
52	630.451	4	BUSH $\phi$ 40-44x30	
53	600.251	20	SCREW M20x60 DIN 931	
54	600.717	20	NUT M20 DIN 980	
55	600.148	4	SCREW M10x30 DIN 933	
56	600.587	4	WASHER $\phi$ 31-56x4 DIN 125A	
57	600.586	4	SPRING PIN $\phi$ 10x60 DIN 1481	
58	630.483	64	SCREW M6x20 similar to DIN 7991	
59	600.472	80	NUT M6 DIN 980	
60	630.136	32	SCREW M8x25 similar to DIN 7991	
61	600.076	64	NUT M8 DIN 980	
62	600.702	32	SCREW M8x25 DIN 933	
63	600.115	32	WASHER $\phi$ 8,4 DIN 125A	
64	630.003	16	SCREW M6x20 DIN 933	
65	600.135	28	WASHER $\phi$ 6,6-18x2 UNI 6593	
66	600.038	2	SPLIT PIN $\phi$ 6x35 DIN 94	
67	600.124	4	GREASE NIPPLE M6	

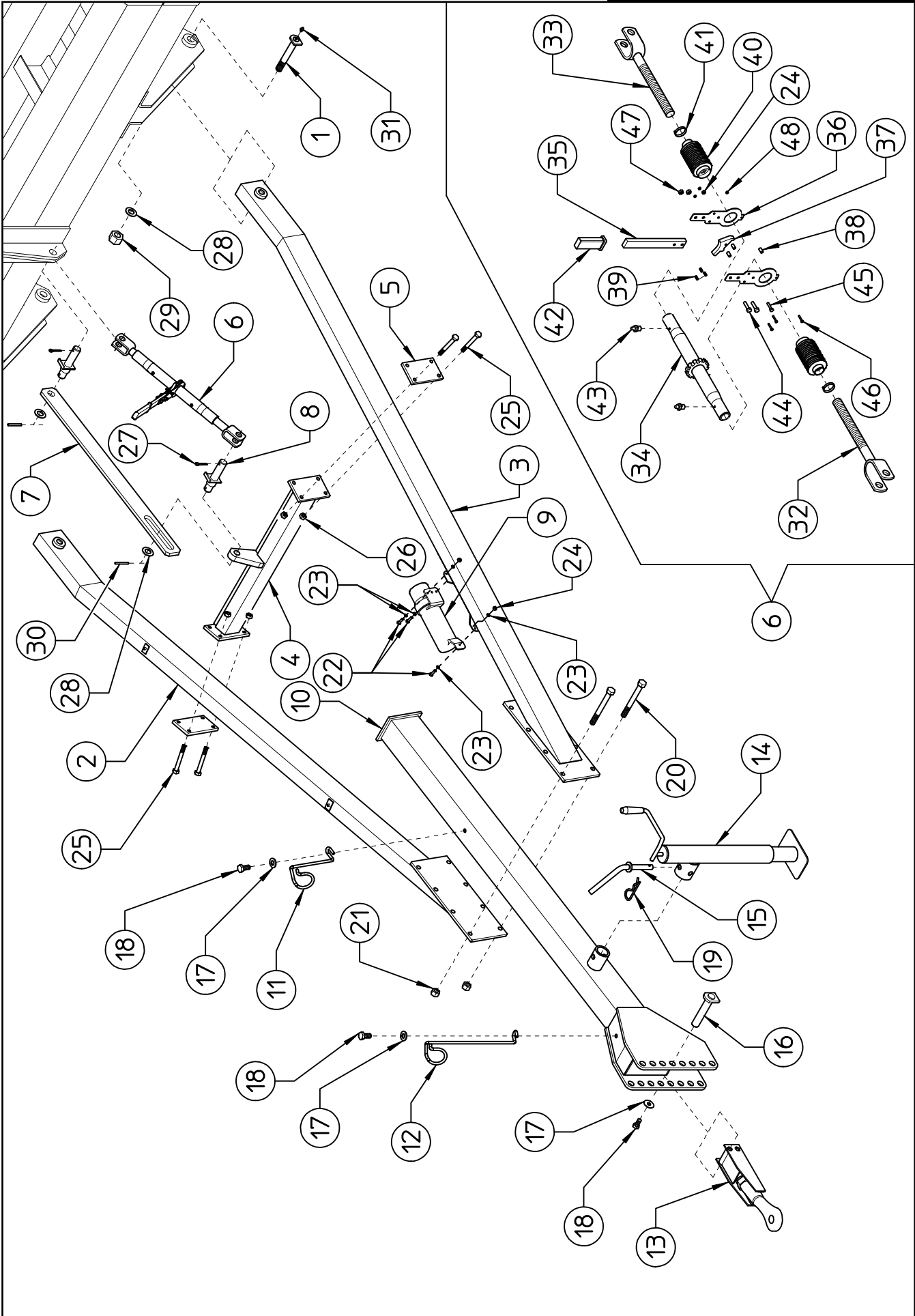


TABLE PART NO 920.275				
ITEM	PART NO	Q.ty	DESCRIPTION	NOTE
1	230.605	2	PIN ø30	
2	230.601	1	RH DRAWBAR	
3	230.602	1	LH DRAWBAR	
4	230.565	1	SUPPORT	
5	230.564	2	COUNTERPLATE	
6	230.628	1	RATCHET LINK	
7	230.608	1	TIE ROD	
8	230.606	2	PIN ø25	
9	230.457	1	CANISTER	
10	230.566	1	FRONT DRAWBAR	
11	230.573	1	REAR HOSE SUPPORT	
12	230.574	1	FRONT HOSE SUPPORT	
13	220.471	1	TRACTOR HITCH	
14	220.166	1	PARKING STAND	
15	200.222	1	PIN	
16	200.828	2	PIN ø25	
17	500.160	4	WASHER ø12-40x4	
18	600.441	4	SCREW M12x25 DIN 933	
19	600.019	1	SPLIT PIN ø3	
20	620.866	8	SCREW M16x145 DIN 931	
21	600.080	8	NUT M16 DIN 980	
22	630.003	3	SCREW M6x20 DIN 933	
23	600.135	6	WASHER ø6,6-18x2 UNI 6593	
24	600.472	4	NUT M6 DIN 980	
25	610.516	8	SCREW M12x100 DIN 931	
26	600.077	8	NUT M12 DIN 980	
27	600.038	2	SPLIT PIN ø6x35 DIN 94	
28	600.336	4	WASHER ø25 DIN 125A	
29	620.255	2	NUT M24 DIN 980	
30	600.108	2	SPRING PIN ø8x40 DIN 1481	
31	600.034	2	GREASE NIPPLE M8	
32	220.219	1	RH TIEROD	
33	220.220	1	LH TIEROD	
34	220.218	1	TIE ROD	
35	220.213	1	LEVER	
36	220.205	2	SUPPORT	
37	220.070	1	HOOK	
38	220.215	3	SPACER	
39	220.073	1	SPRING	
40	220.192	2	RUBBER PROTECTION	
41	610.507	2	CLAMP ø25-40x9	
42	610.811	1	HANDLE	
43	600.124	2	GREASE NIPPLE M6	
44	600.702	2	SCREW M8x25 DIN 933	
45	600.202	1	SCREW M6x25 DIN 933	
46	610.717	3	SCREW M4x25 DIN 933	
47	600.076	2	NUT M8 DIN 980	
48	610.718	3	NUT M4 DIN 982	

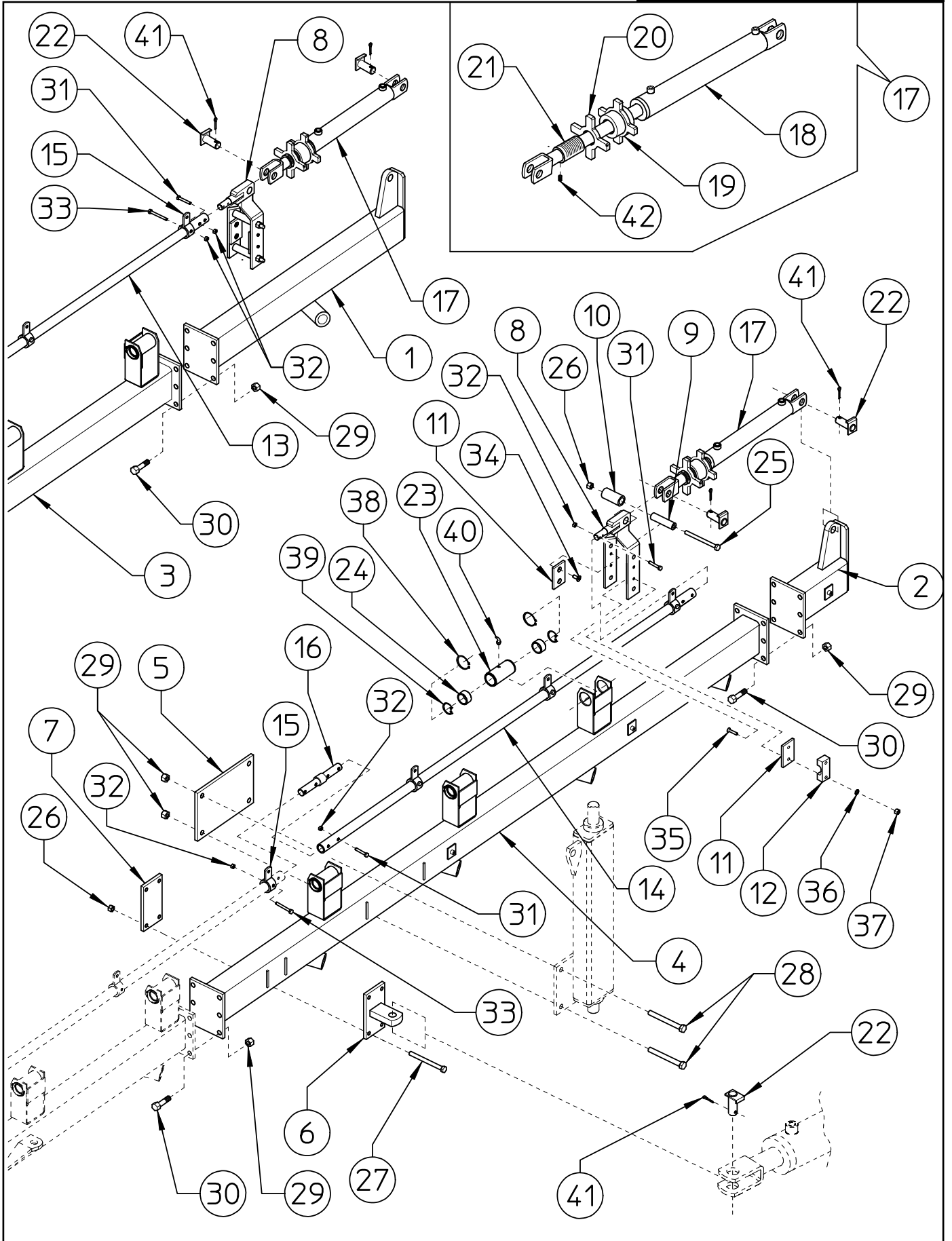


TABLE PART NO 920.276				
ITEM	PART NO	Q.ty	DESCRIPTION	NOTE
1	230.571	1	RH SUPPORT	
2	230.572	1	LH SUPPORT	
3	230.569	1	RH SECTION	
4	230.570	1	LH SECTION	
5	230.553	2	COUNTERPLATE	
6	230.578	2	SUPPORT	
7	230.579	2	COUNTERPLATE	
8	230.585	2	SUPPORT	
9	230.607	4	SPACER	
10	230.613	2	BUSH	
11	210.858	4	SLIDING	
12	230.623	2	HOSE SUPPORT	
13	230.588	1	RH PIPE (L.2960-116,54")	
14	230.589	1	LH PIPE (L.2220-87,4")	
15	230.592	9	BUSH	
16	230.586	2	PIN ø22-35	
17	230.584	2	CYLINDER WITH BUSHING	
18	210.816	2	CYLINDER ø50-30	
19	230.583	2	BUSH M40x1,5	
20	230.582	2	LOCK M40x1,5	
21	230.581	2	SCREW M40x1,5	
22	230.368	6	PIN ø25	
23	220.343	7	BUSH	
24	220.342	14	NYLON BUSH	
25	600.001	4	SCREW M12x140 DIN 931	
26	600.077	12	NUT M12 DIN 980	
27	600.225	8	SCREW M12x120 DIN 931	
28	610.698	8	SCREW M16x130 DIN 931	
29	600.080	32	NUT M16 DIN 980	
30	610.167	24	SCREW M16x45 DIN 933	
31	600.551	10	SCREW M8x45 DIN 931	
32	600.076	19	NUT M8 DIN 980	
33	610.525	9	SCREW M8x60 DIN 933	
34	610.663	4	SCREW M8x16 similar to DIN 7991	
35	630.489	4	SCREW M8x45 similar to DIN 7991	
36	600.229	4	SPRING WASHER ø8,4 DIN 125A	
37	600.037	4	NUT M8 DIN 934	
38	610.833	14	SNAP RING E50 DIN 471	
39	610.898	14	RING SB 44	
40	600.968	7	GREASE NIPPLE M6-45°	
41	600.038	6	SPLIT PIN ø6x35 DIN 94	
42	600.583	2	SCREW M6x10 DIN 914	

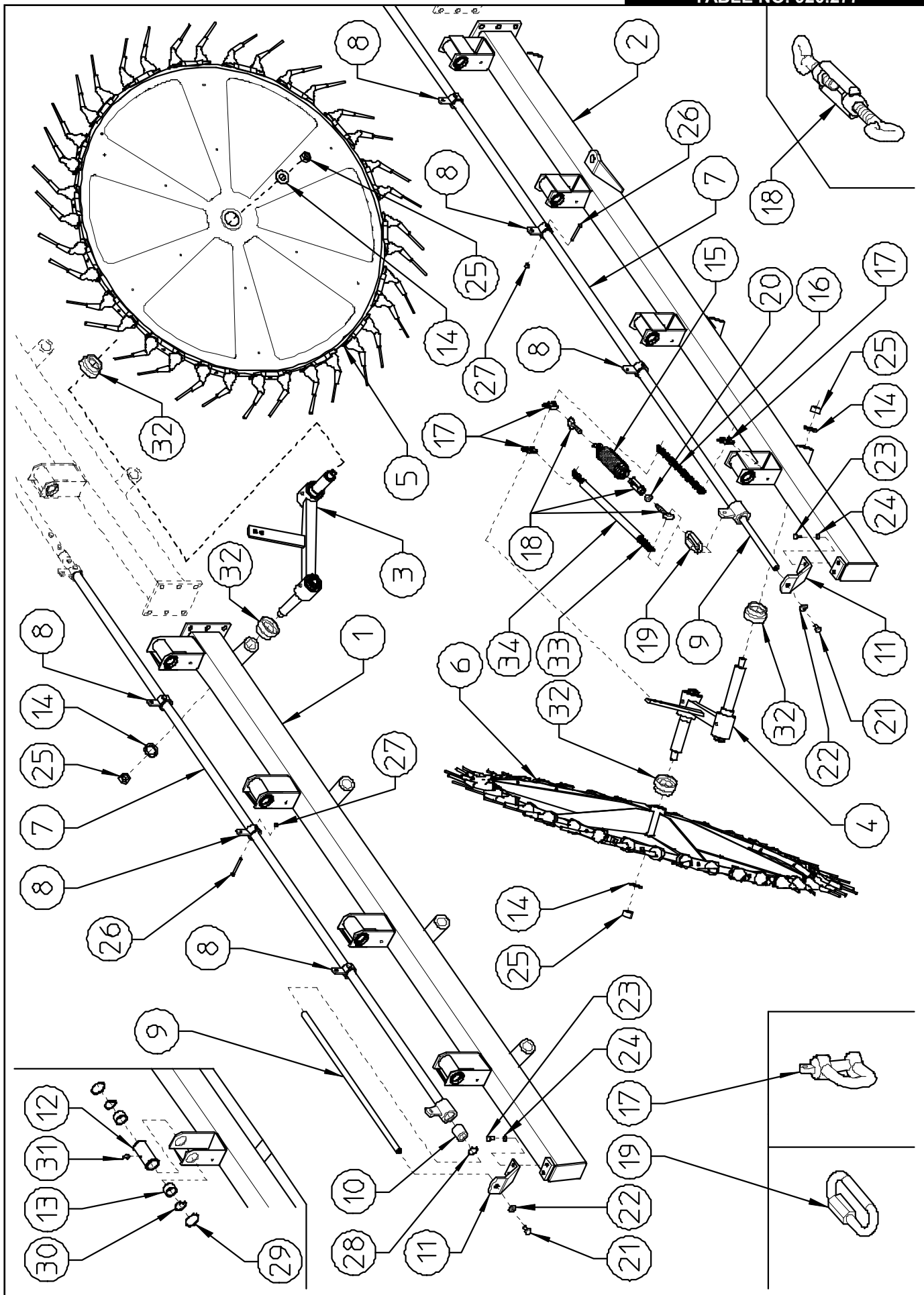




TABLE PART NO 920.277				
ITEM	PART NO	Q.ty	DESCRIPTION	NOTE
1	230.567	1	RH SECTION	
2	230.568	1	LH SECTION	
3	230.540	9	RH ARM, ASSY	
4	230.541	8	LH ARM, ASSY	
5	230.543	9	RH FINGER WHEEL, ASSY	
6	230.544	8	LH FINGER WHEEL, ASSY	
7	230.587	2	PIPE (L.3040-119,68")	
8	230.592	6	BUSH	
9	230.590	2	ROD ø20	
10	230.591	2	BUSH ø35	
11	230.580	2	FRONT SUPPORT	
12	220.343	8	BUSH	
13	220.342	16	NYLON BUSH	
14	200.165	34	WASHER ø23-50x4	
15	230.598	17	SPRING	
16	210.982	17	CHAINE (L.360-14,18")	
17	610.687	34	"D" SHACKLE	
18	630.455	17	TIE ROD M12	
19	630.456	17	LOCK	
20	600.008	17	NUT M10 DIN 934	
21	600.770	2	SCREW M12x20 DIN 933	
22	600.018	2	SPRING WASHER ø13 DIN 125A	
23	600.227	4	SCREW M10x20 DIN 933	
24	600.024	4	SPRING WASHER ø10.5 DIN 125A	
25	600.079	34	NUT M22 DIN 980	
26	610.525	6	SCREW M8x60 DIN 931	
27	600.076	6	NUT M8 DIN 980	
28	630.453	2	SNAP RING I35 DIN 472	
29	610.833	16	SNAP RING E50 DIN 471	
30	610.898	16	RING SB 44	
31	600.968	8	GREASE NIPPLE M6-45°	
32	230.550	34	PROTECTION	
33	230.657	17	CHAINE (L.675-26,57")	
34	230.708	17	PROTECTION	

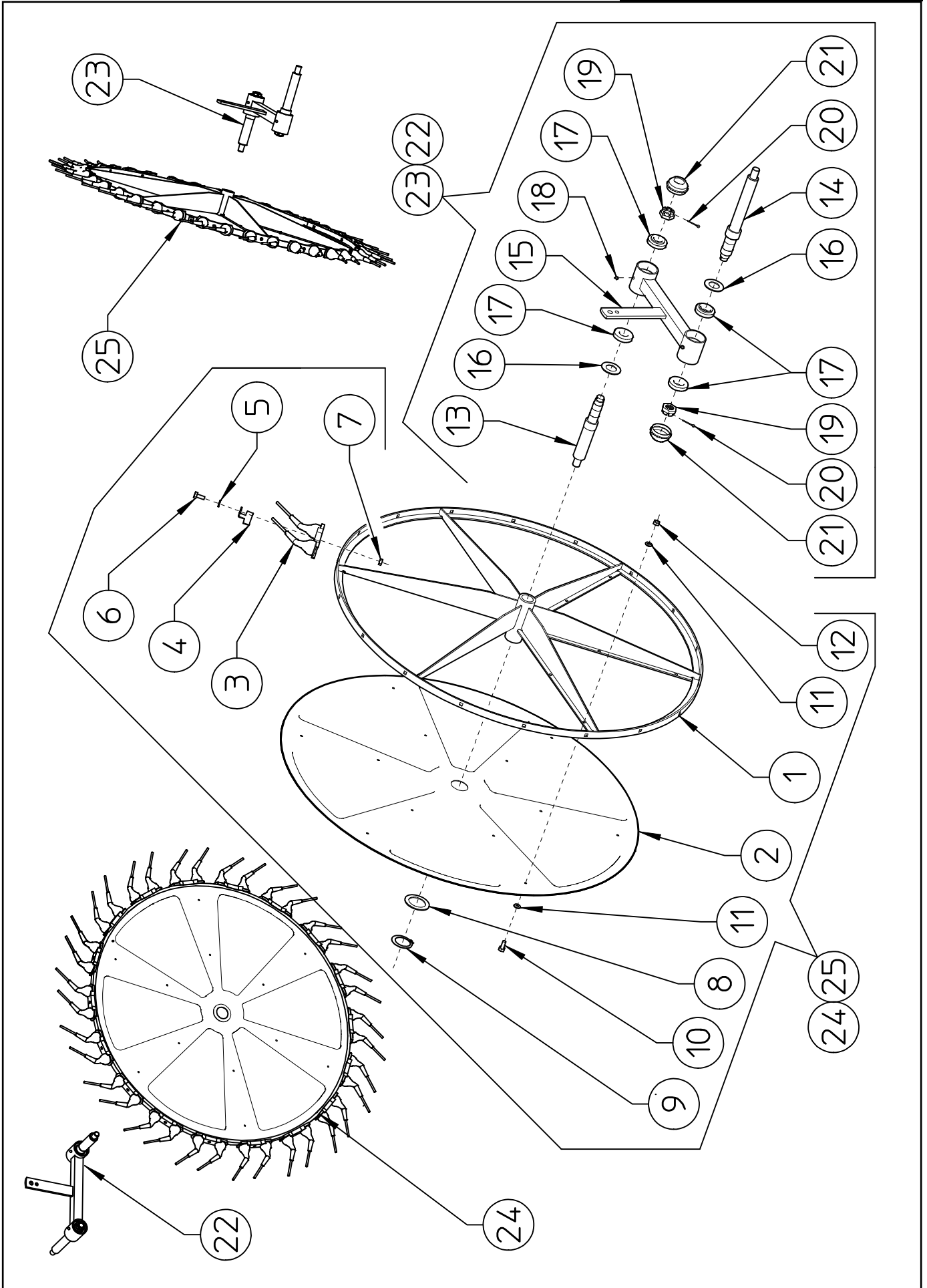


TABLE PART NO 920.278				
ITEM	PART NO	Q.ty	DESCRIPTION	NOTE
1	230.545	17	RIM	
2	230.508	17	FLANGE	
3	230.466	306	TINE	
4	230.548	102	LOCK	
5	600.322	306	WASHER ø10.5 DIN 433	
6	600.006	306	SCREW M10x25 DIN 933	
7	600.029	306	NUT M10 DIN 980	
8	230.549	17	WASHER ø80-56x3	
9	600.908	17	SNAP RING E55 DIN 471	
10	630.003	204	SCREW M6x20 DIN 933	
11	600.135	408	WASHER ø6,6 UNI 6593	
12	600.472	204	NUT M6 DIN 980	
13	230.547	17	PIN ø35 L.275-10,83"	
14	230.546	17	PIN ø35 L.310-12,2"	
15	230.542	17	ARM	
16	610.960	34	DUST COVER	
17	610.935	68	BEARING 32007X	
18	600.124	34	GREASE NIPPLE M6	
19	600.288	34	LOCK NUT M27x1,5	
20	600.291	34	SPLIT PIN ø4x40 DIN 94	
21	600.290	34	CAP	
22	230.540	9	RH ARM, ASSY	
23	230.541	8	LH ARM, ASSY	
24	230.543	9	RH FINGER WHEEL, ASSY	
25	230.544	8	LH FINGER WHEEL, ASSY	

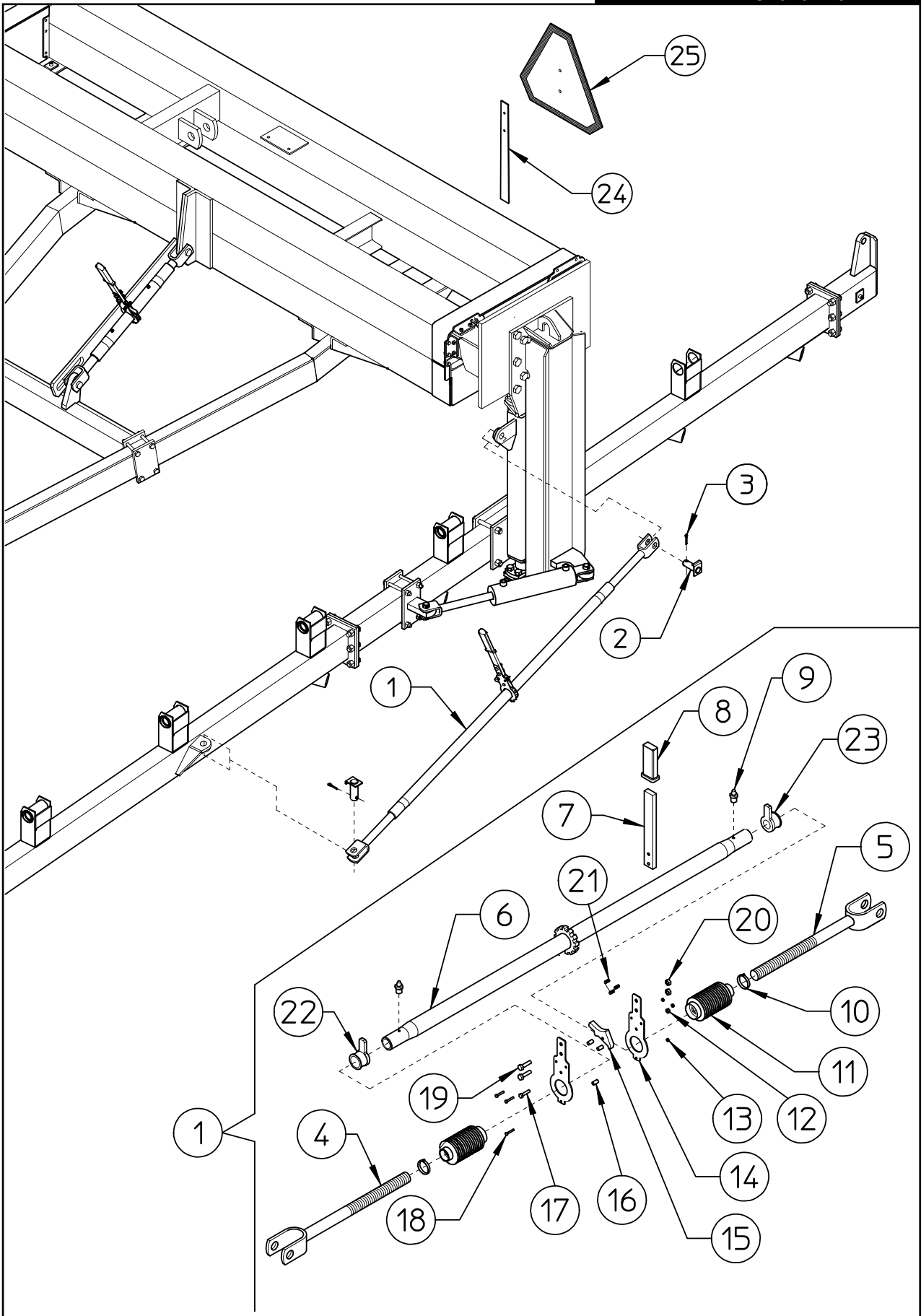


TABLE PART NO 920.279				
ITEM	PART NO	Q.ty	DESCRIPTION	NOTE
1	230.609	2	RATCHET LINK	
2	230.368	4	PIN ø25	
3	600.038	4	SPLIT PIN ø6x35 DIN 94	
4	230.610	2	RH TIEROD	
5	230.611	2	LH TIEROD	
6	220.182	2	TIE ROD	
7	220.213	2	LEVER	
8	610.811	2	HANDLE	
9	600.124	4	GREASE NIPPLE M6	
10	610.507	4	CLAMP ø25-40x9	
11	220.192	4	RUBBER PROTECTION	
12	600.472	2	NUT M6 DIN 980	
13	610.718	6	NUT M4 DIN 982	
14	220.205	4	SUPPORT	
15	220.070	2	HOOK	
16	220.215	6	SPACER	
17	600.202	2	SCREW M6x25 DIN 933	
18	610.717	6	SCREW M4x25 DIN 933	
19	600.702	4	SCREW M8x25 DIN 933	
20	600.076	4	NUT M8 DIN 980	
21	220.073	2	SPRING	
22	220.201	2	LOCKING BUSH RH	
23	220.202	2	LOCKING BUSH LH	
24	220.413	1	SPADE	
25	220.414	1	SMV EMBLEME WITH ACCESS.	

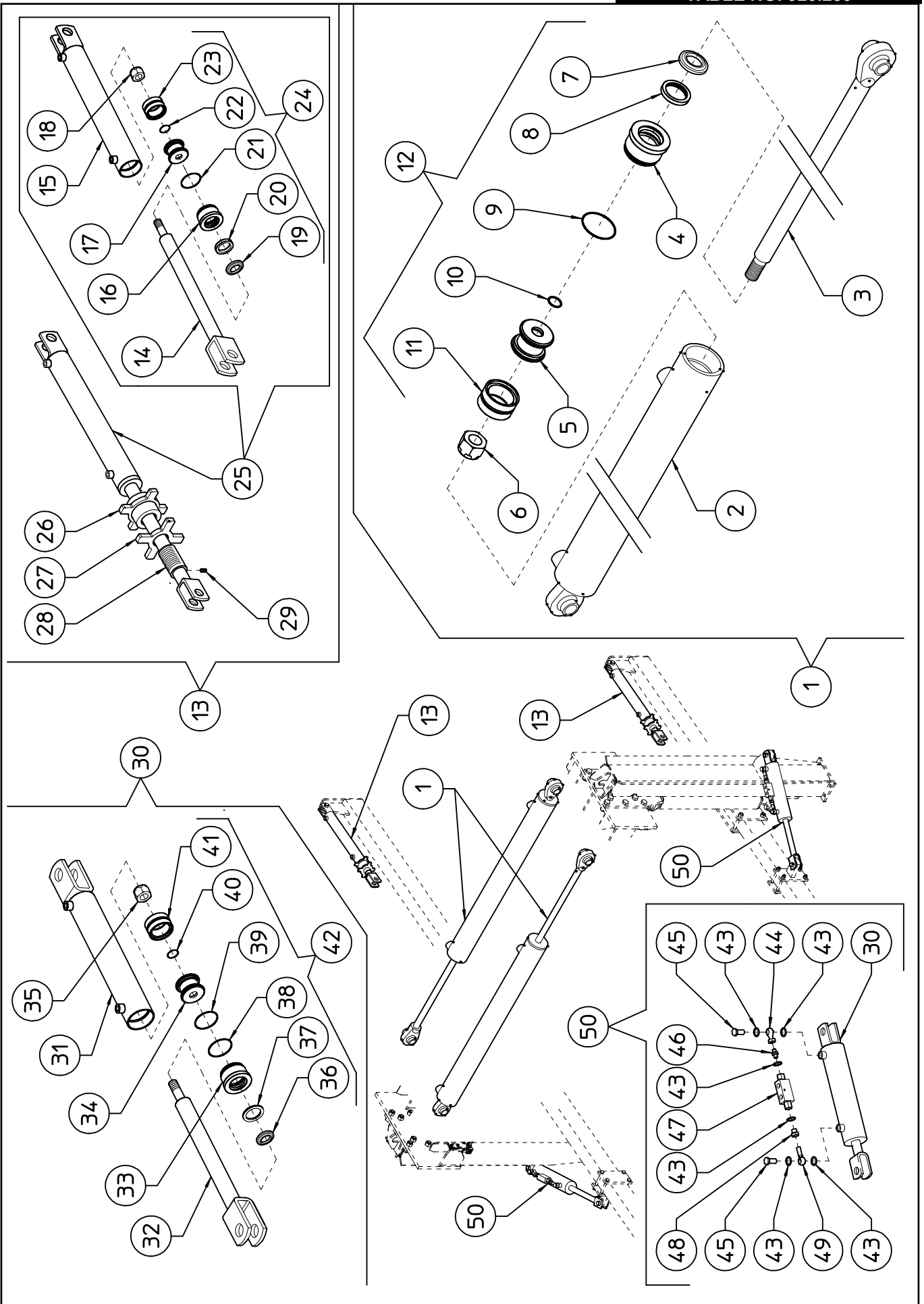


TABLE PART NO 920.280

ITEM	PART NO	Q.ty	DESCRIPTION	NOTE
1	230.559	2	CYLINDER $\phi$ 90-40x1225	
2	230.631	2	CYLINDER BARREL $\phi$ 90	(one for cylinder)
3	230.632	2	ROD $\phi$ 40	(one for cylinder)
4	230.634	2	CYLINDER HEAD $\phi$ 90-40	(one for cylinder)
5	230.635	2	PISTON $\phi$ 90	(one for cylinder)
6	610.005	2	NUT M27x2 DIN 982	(one for cylinder)
7	610.600	2	GASKET WRM 157188 or equivalent (rod $\phi$ 40)	(one for cylinder)
8	610.599	2	GASKET 196157 or equivalent (rod $\phi$ 40)	(one for cylinder)
9	630.493	2	OR GASKET $\phi$ 79,77x5,34	(one for cylinder)
10	610.009	2	OR GASKET $\phi$ 26,58x3,53	(one for cylinder)
11	630.492	2	GASKET DBM 354275 or equivalent ( $\phi$ 90)	(one for cylinder)
12	630.491	2	SET OF GASKET	(one for cylinder)
13	230.584	2	CYLINDER $\phi$ 50-30 WITH BUSHING	
14	210.221	2	ROD $\phi$ 30	(one for cylinder)
15	210.222	2	CYLINDER BARREL $\phi$ 50	(one for cylinder)
16	220.524	2	CYLINDER HEAD $\phi$ 50-30	(one for cylinder)
17	200.304	2	PISTON $\phi$ 50	(one for cylinder)
18	600.642	2	NUT M18x1,5 DIN 982	(one for cylinder)
19	600.645	2	GASKET WRM 118149 or equivalent (rod $\phi$ 30)	(one for cylinder)
20	610.031	2	GASKET B157118/1 or equivalent (rod $\phi$ 30)	(one for cylinder)
21	610.090	2	OR GASKET $\phi$ 42,86x3,53	(one for cylinder)
22	600.646	2	OR GASKET $\phi$ 20,29x2,62	(one for cylinder)
23	600.648	2	GASKET DBM 196133 or equivalent ( $\phi$ 50)	(one for cylinder)
24	620.022	2	SET OF GASKET $\phi$ 50-30	(one for cylinder)
25	210.816	2	CYLINDER $\phi$ 50-30 WITHOUT BUSHING	
26	230.583	2	BUSH M40x1,5	(one for cylinder)
27	230.582	2	LOCK M40x1,5	(one for cylinder)
28	230.581	2	SCREW M40x1,5	(one for cylinder)
29	600.583	2	SCREW M6x10 DIN 914	(one for cylinder)
30	210.570	2	CYLINDER $\phi$ 70-30x210	
31	210.341	2	CYLINDER BARREL $\phi$ 70	(one for cylinder)
32	210.568	2	ROD $\phi$ 30	(one for cylinder)
33	210.569	2	CYLINDER HEAD $\phi$ 70-30	(one for cylinder)
34	210.227	2	PISTON $\phi$ 70	(one for cylinder)
35	600.879	2	NUT M24x2 DIN 982	(one for cylinder)
36	600.645	2	GASKET WRM 118149 or equivalent (rod $\phi$ 30)	(one for cylinder)
37	610.031	2	GASKET B157118/1 or equivalent (rod $\phi$ 30)	(one for cylinder)
38	620.668	2	OR GASKET $\phi$ 69,52x2,62	(one for cylinder)
39	610.923	2	OR GASKET $\phi$ 63,5x3,53+BK	(one for cylinder)
40	620.669	2	OR GASKET $\phi$ 18,72x2,62	(one for cylinder)
41	600.984	2	GASKET DBM 275196 or equivalent ( $\phi$ 70)	(one for cylinder)
42	610.340	2	SET OF GASKET $\phi$ 70-30	(one for cylinder)
43	620.452	12	COPPER WASHER $\phi$ 3/8"	(6 for cylinder)
44	630.315	2	FITTING 3/8"	(one for cylinder)
45	600.040	4	FITTING 3/8"	(2 for cylinder)
46	600.270	2	NIPPLES 3/8"-3/8"	(one for cylinder)
47	600.799	2	LOCK VALVE 3/8"	(one for cylinder)
48	610.469	2	FITTING 3/8"	(one for cylinder)
49	230.612	2	FITTING 3/8"- $\phi$ 12	(one for cylinder)
50	230.630	2	CYLINDER $\phi$ 70-30 WITH ACCESORIES	

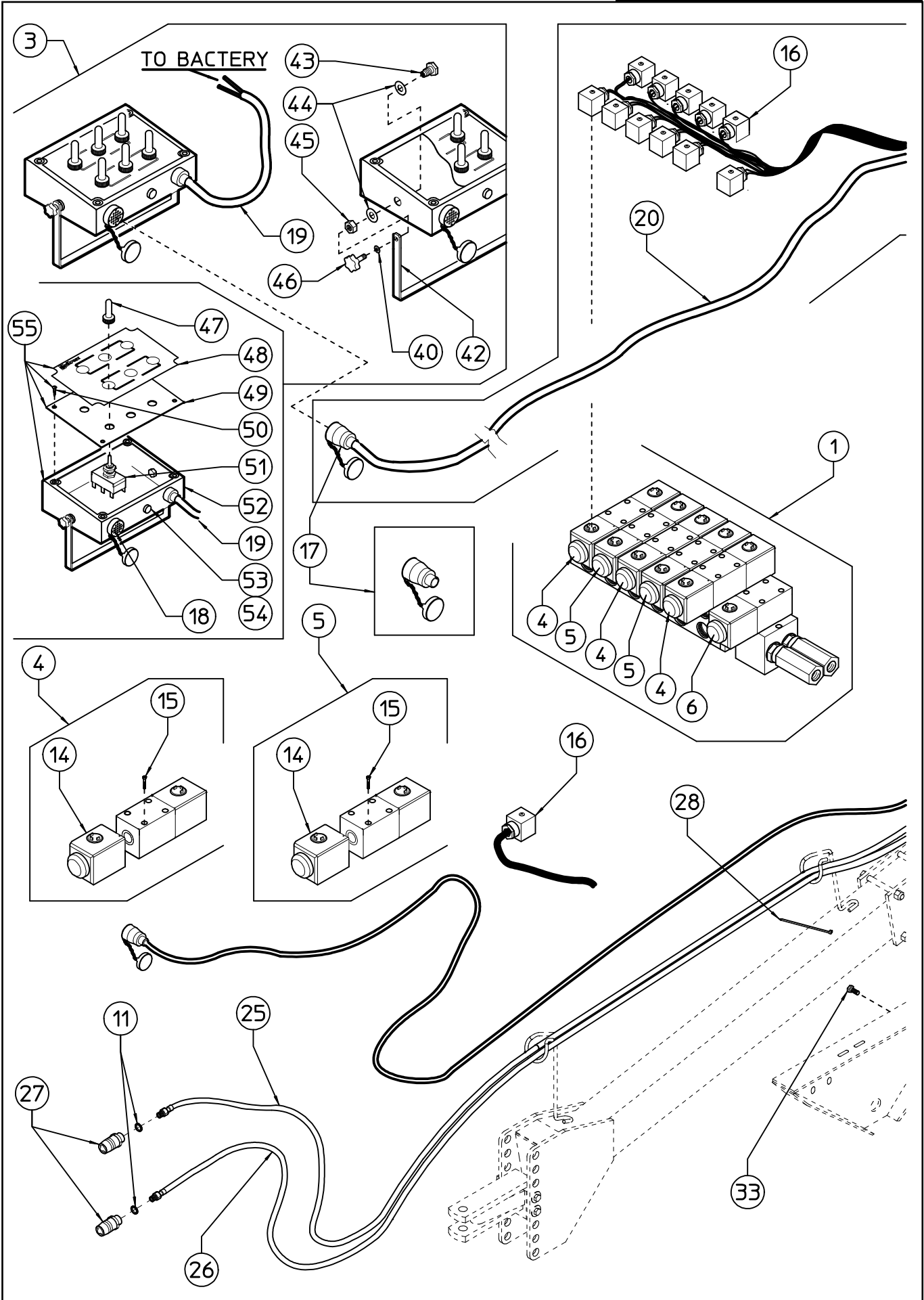
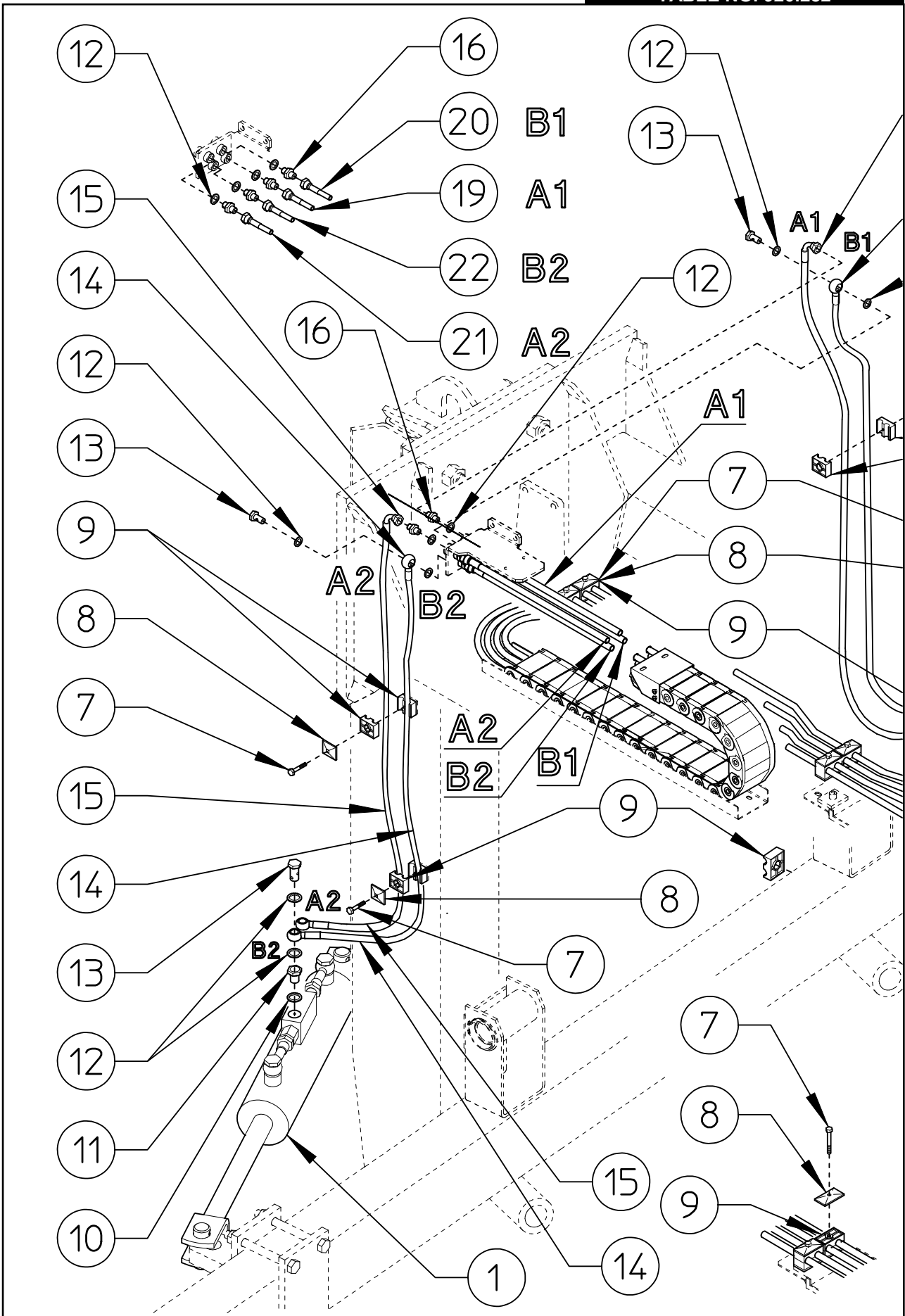






TABLE PART NO 920.281				
ITEM	PART NO	Q.ty	DESCRIPTION	NOTE
1	630.501	1	VALVE ASSY	KITBO276
2	630.502	1	HARNESS	C0094
3	630.503	1	CONTROL BOARD	C0093
4	630.504	3	SOLENOID VALVE (12V DC)	A102109055
5	630.505	2	SOLENOID VALVE (12V DC)	A102109048
6	630.506	1	SOLENOID VALVE (12V DC)	A102109029
7	630.507	1	BASE WITH 5 CONNECTIONS	CETOP 3
8	630.508	2	OR GASKET	
9	630.509	1	BASE WITH 1 CONNECTION	CETOP 3
10	600.223	4	SCREW Mx20 DIN 933	
11	630.048	8	COPPER WASHER $\phi$ 1/2"	
12	600.422	2	NIPPLES 1/2"-1/2"	
13	600.424	2	UNIDIRECTIONAL VALVE 1/2"	
14	630.510	11	COIL	A10505847
15	630.511	24	SCREW M5x30 DIN 912	
16	630.512	11	CONNECTOR WITH CABLE	C0095
17	630.513	1	CABLE PLUG	
18	630.514	1	BOX PLUG	
19	630.515	1	CABLE L.10000 - 33'	TECO 14087-FRX
20	630.516	1	CABLE L.3000 - 10'	BHO7RNF 4G-2,5
21	630.482	1	FITTING 1/2" MALE 3/8" FEMALE	
22	600.416	1	NIPPLES 1/2" - 3/8"	
23	620.452	2	COPPER WASHER 3/8"	
24	600.040	1	FITTING 3/8"	
25	630.461	1	HOSE 3/8" L.7500-295,3" - 1/2"	eye 3/8"
26	630.462	1	HOSE 3/8" L.7500-295,3" - 1/2"	female 3/8" - 90°
27	600.273	2	RAPID COUPLING 1/2" MALE	
28	620.039	9	CLAMP 4,5x300	

29	630.457	6	COLLAR ø16	
30	610.164	3	CLAMP	
31	610.165	3	SCREW M8x35 DIN 933	
32	230.563	1	SUPPORT	
33	600.148	4	SCREW M10x30 DIN 933	
34	600.322	4	WASHER ø10,5 DIN 125A	
35	600.029	4	NUT M10 DIN 980	
36	610.424	2	SCREW M6x20 DIN 912	
37	600.135	2	WASHER ø6,6/18 UNI 6593	
38	600.472	2	NUT M6 DIN 980	
39	630.484	4	SCREW M5x80 DIN 912	
40	630.490	6	WASHER ø5,3/15 UNI 6593	
41	620.367	4	NUT M5 DIN 980	
42	230.616	1	SUPPORT	
43	230.615	2	PIN M12/ø9/M5	
44	600.089	4	WASHER ø13 DIN 125A	
45	600.132	2	NUT M12 DIN 936	
46	630.486	2	HANDLE ø23-M5x20	
47	630.517	6	PROTECTION	NAI/WD1911
48	001.583	1	LABEL	
49	630.519	1	PANEL	
50	630.520	4	SCREW	
51	630.518	6	SWITCH	NAI/T2155-A
52	630.521	1	BOX LESS COVER	
53	630.522	1	FUSE CARRIER	RSC/197-9519
54	630.523	1	FUSE	RSC/418-9618
55	630.524	1	EMPTY CONTROL BOX	
56	630.525	1	EMPTY CABLE SOLENOID VALVE BOX	



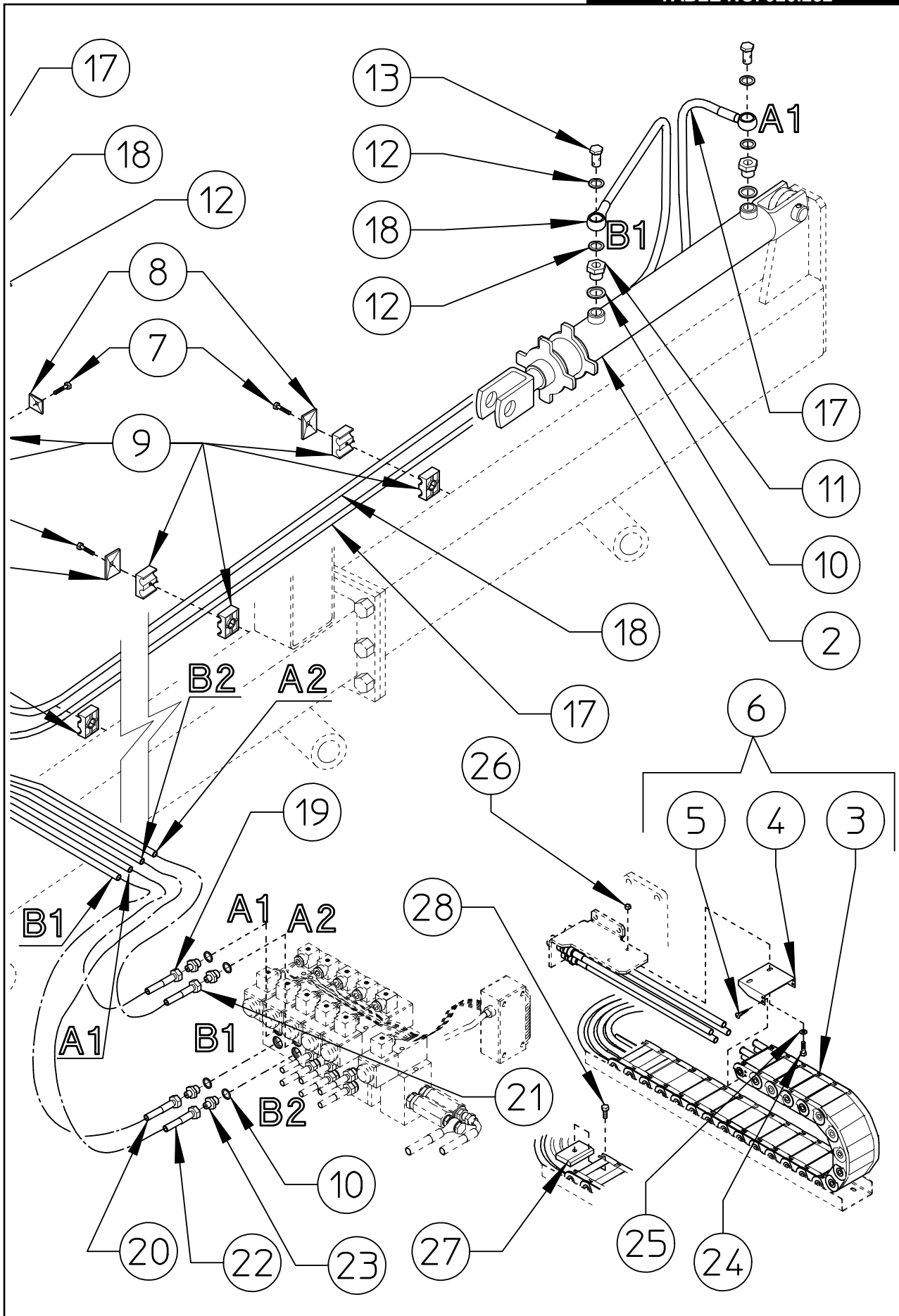


TABLE PART NO 920.282				
ITEM	PART NO	Q.ty	DESCRIPTION	NOTE
1	230.630	1	CYLINDER $\phi$ 70-30 WITH ACCESORIES	
2	230.584	1	CYLINDER $\phi$ 50-30 WITH BUSHING	
3	230.594	1	CHAINE SR 305	
4	230.597	2	SUPPORT	
5	630.454	8	SCREW $\phi$ 3,9 (7P) DIN 7982B	
6	230.596	1	CHAINE, ASSY	
7	610.803	11	SCREW M6x35 DIN 931	
8	610.802	11	CLAMP	
9	630.078	22	DOUBLE COLLAR $\phi$ 12	
10	620.452	8	COPPER WASHER $\phi$ 3/8"	
11	620.462	4	FITTING 3/8" (MALE) -1/4" (FEMALE)	
12	630.376	18	COPPER WASHER $\phi$ 1/4"	
13	600.820	6	FITTING 3/8" (MALE)	
14	630.476	1	HOSE 1/4" L.1540 - 60,62" (EYE 1/4")	

---

15	630.475	1	HOSE 1/4" L.1570 - 61,82" (EYE 1/4" - FEMALE 90° 1/4")	
16	630.320	6	NIPPLES 1/4" - 1/4"	
17	630.471	1	HOSE 1/4" L.4320 - 170" (EYE 1/4" - FEMALE 90° 1/4")	
18	630.472	1	HOSE 1/4" L.4220 - 166,14" (EYE 1/4")	
19	630.469	1	HOSE 1/4" L.3080 - 121,26" (FEMALE 1/4")	
20	630.470	1	HOSE 1/4" L.3060 - 120,47" (FEMALE 1/4")	
21	630.467	1	HOSE 1/4" L.3190 - 125,59" (FEMALE 1/4")	
22	630.468	1	HOSE 1/4" L.3170 - 124,8" (FEMALE 1/4")	
23	600.883	4	NIPPLES 3/8"-1/4"	
24	630.003	4	SCREW M6x20 DIN 933	
25	600.135	4	WASHER ø6,6-18 UNI 6593	
26	600.472	4	NUT M6 DIN 980	
27	230.617	1	LOCK	
28	600.668	1	SCREW M6x12 DIN 933	

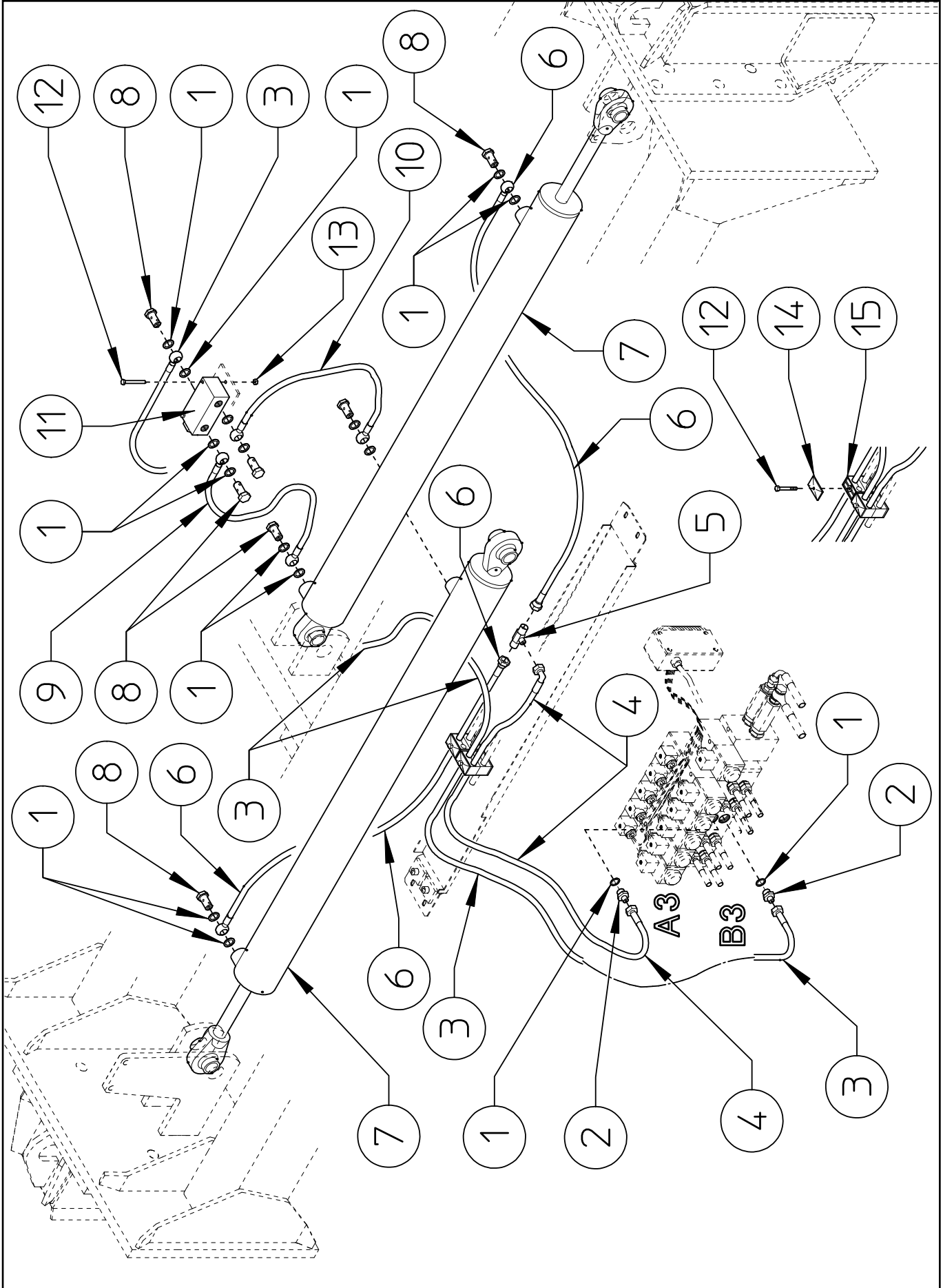




TABLE PART NO 920.283				
ITEM	PART NO	Q.ty	DESCRIPTION	NOTE
1	620.452	16	COPPER WASHER ø3/8"	
2	600.883	2	NIPPLES 3/8"-1/4"	
3	630.477	1	HOSE 1/4" L.840 - 33,07" (FEMALE 1/4" - EYE 3/8")	
4	630.478	1	HOSE 1/4" L.700 - 27,56" (FEMALE 1/4" - FEMALE 90° 3/8")	
5	600.272	1	FITTING 3/8" (MALE)	
6	630.479	2	HOSE 1/4" L.1100 - 43,31" (EYE 3/8" - FEMALE 3/8")	
7	230.559	2	CILYNDER ø90-40x1225	
8	600.040	7	FITTING 3/8" MALE	
9	630.480	1	HOSE 1/4" L.250 - 9,84" (EYE 3/8")	
10	630.481	1	HOSE 1/4" L.370 - 14,57" (EYE 3/8")	
11	600.974	1	FLOW DIVIDER 3/8"	
12	600.970	4	SCREW M6x60 DIN 931	
13	600.472	2	NUT M6 DIN 980	
14	610.802	2	CLAMP	
15	630.078	8	DOUBLE COLLAR ø12	



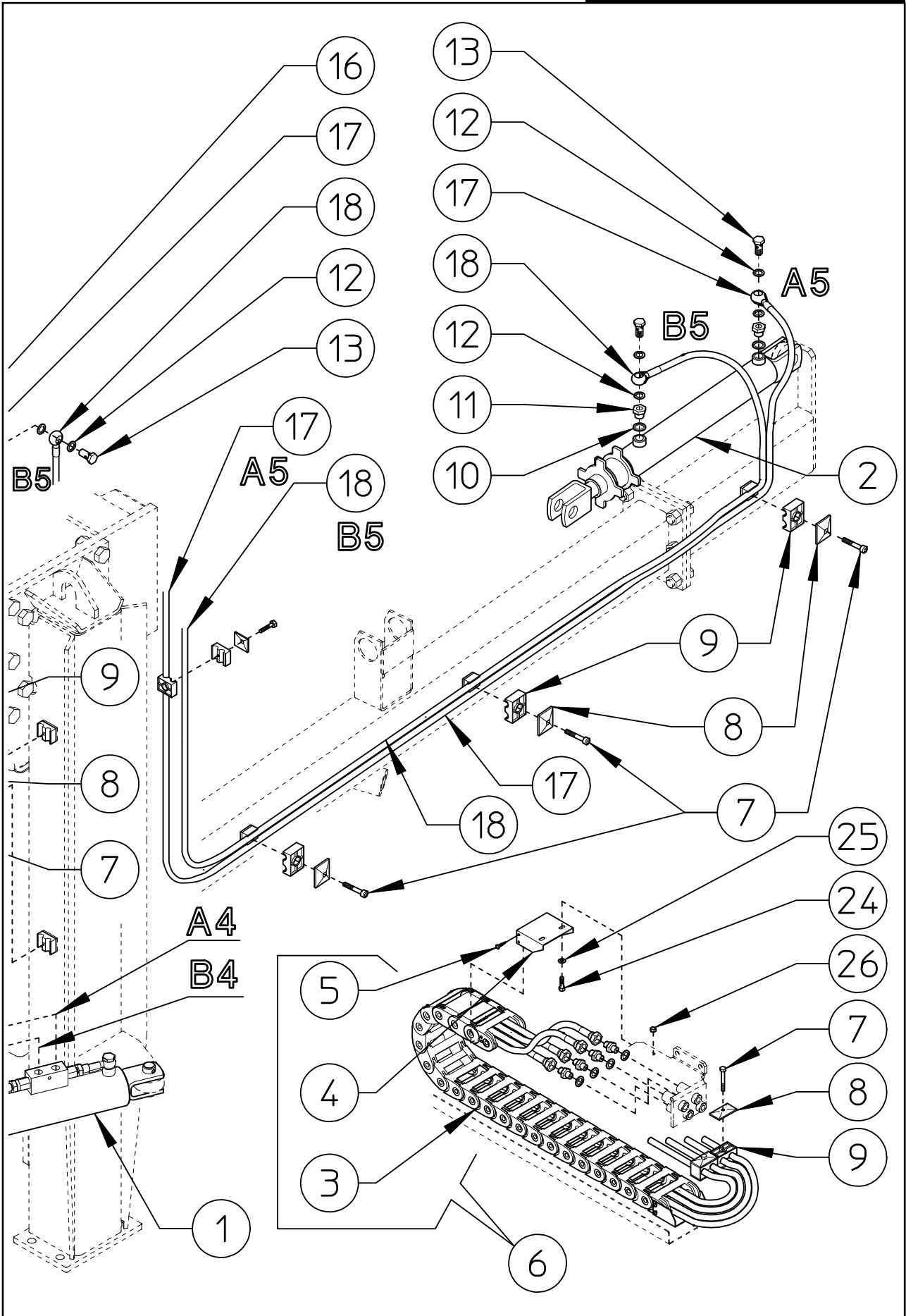
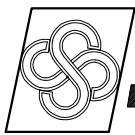


TABLE PART NO 920.284				
ITEM	PART NO	Q.ty	DESCRIPTION	NOTE
1	230.630	1	CYLINDER ø70-30 WITH ACCESORIES	
2	230.584	1	CYLINDER ø50-30 WITH BUSHING	
3	230.594	1	CHAINE SR 305	
4	230.597	2	SUPPORT	
5	630.454	8	SCREW ø3,9 (7P) DIN 7982B	
6	230.596	1	CHAINE, ASSY	
7	610.803	8	SCREW M6x35 DIN 931	
8	610.802	8	CLAMP	
9	630.078	16	DOUBLE COLLAR ø12	
10	620.452	8	COPPER WASHER ø3/8"	
11	620.462	4	FITTING 3/8" (MALE) -1/4" (FEMALE)	
12	630.376	18	COPPER WASHER ø1/4"	
13	600.820	6	FITTING 3/8" (MALE)	
14	630.476	1	HOSE 1/4" L.1540 - 60,62" (EYE 1/4")	

---

15	630.475	1	HOSE 1/4" L.1570 - 61,82" (EYE 1/4" - FEMALE 90° 1/4")	
16	630.320	6	NIPPLES 1/4" - 1/4"	
17	630.473	1	HOSE 1/4" L.3600 - 141,7" (EYE 1/4" - FEMALE 90° 1/4")	
18	630.474	1	HOSE 1/4" L.3580 - 140,94" (EYE 1/4")	
19	630.465	1	HOSE 1/4" L.3810 - 150" (FEMALE 1/4")	
20	630.466	1	HOSE 1/4" L.3790 - 149,22" (FEMALE 1/4")	
21	630.463	1	HOSE 1/4" L.3940 - 155,12" (FEMALE 1/4")	
22	630.464	1	HOSE 1/4" L.3910 - 153,94" (FEMALE 1/4")	
23	600.883	4	NIPPLES 3/8"-1/4"	
24	630.003	4	SCREW M6x20 DIN 933	
25	600.135	4	WASHER ø6,6-18 UNI 6593	
26	600.472	4	NUT M6 DIN 980	
27	230.617	1	LOCK	
28	600.668	1	SCREW M6x12 DIN 933	



**AGRICULTURAL MACHINERY**  
**sitrex**® SpA .

Zona Industriale-Viale Grecia, 8  
06018 TRESTINA-(Perugia)-ITALY  
Tel. +39.075.8540021-Telefax +39.075.8540523  
e-mail: [sitrex@sitrex.it](mailto:sitrex@sitrex.it) [www.sitrex.com](http://www.sitrex.com)

